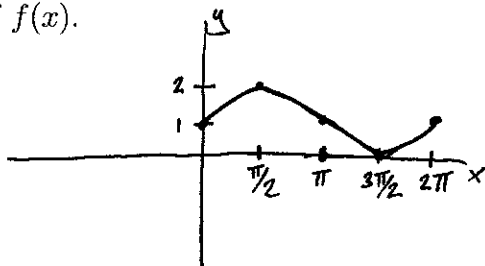
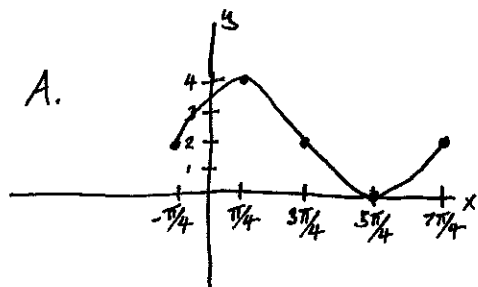


(d) The following is the graph of $f(x)$.

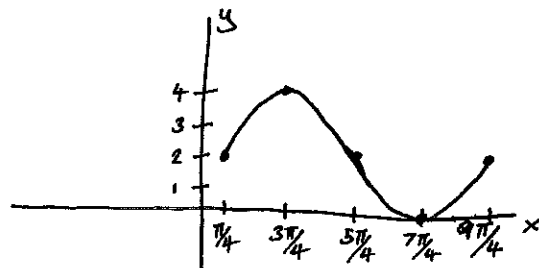


Which of the following is the graph of $2f(x + \frac{\pi}{4})$?

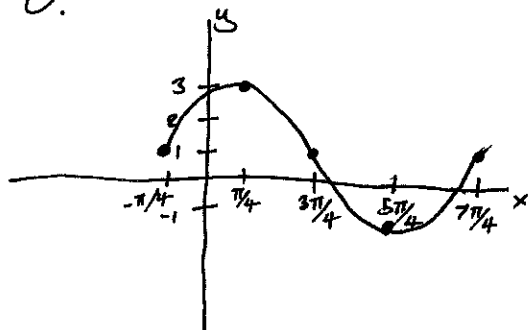
A.



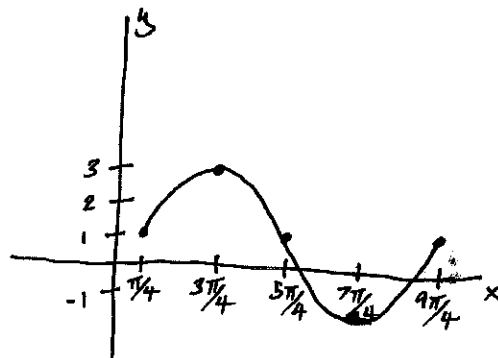
B.



C.



D.



5. [10 pts] A box with an open top is to be constructed from a rectangular piece of cardboard with dimensions 12 in. by 20 in. by cutting out equal squares of side x at each corner and then folding up the sides as in the figure. Express the volume V of the box as a function of x .

